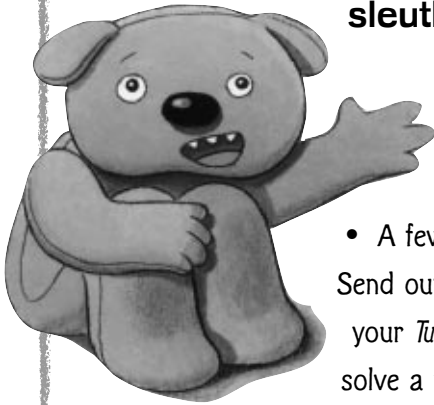


TUFF FLUFF'S PRIVATE EYE PARTY KIT

Get young readers hot on the trail of this lovable long-eared sleuth with a memorable mystery event!



Here are some suggestions for creating an extraordinary event:

- A few weeks prior to the event, hang up the enclosed **poster** to attract *Tuff Fluff* fans. Send out the **invitations** to invite special customers and their favorite stuffed friends to your *Tuff Fluff* party. Kids will be excited to bring along their stuffed animals to help them solve a mystery.
- Help kids get in touch with their own inner detectives! The enclosed **reproducible eye patch**, **nametags**, and **crossword puzzle** will let everyone join in the fun. The P.I.'s (and their stuffed animals!) can wear eye patches, pick detective nicknames, and even polish their puzzle-solving skills between cases. You can also encourage kids to come dressed up as detectives: ties, hats, or magnifying glasses are easy ways for kids to transform themselves.
- Ask a member of your staff to take digital or Polaroid pictures of the "detective squad." Don't forget to include the stuffed animals! Pictures make terrific souvenirs and allow participants to share the event with friends.
- Put the detectives to the test: Hidden in the pages of *Tuff Fluff* are pictures of **suspicious donkeys**. How many can your young readers find?
- Use the **suspect cards** in a sensational seek-and-find activity! Before the kids arrive, hide copies of each different character card in a designated location around the store. You might put Tuff Fluff's card in "Los Attic" or Butterbean's in "Beantown," for example. When kids have found each of the characters, they can color in the cards.
- Provide cotton balls and tape or glue so that kids can attempt their own brain transplant for Duckie. Kids can color the enclosed **Duckie coloring sheet** and then fill his head with the "stuffing."
- At the end of the party, ask the detectives to drop their nametags into a hat. Draw a nametag to determine the winner of the enclosed **autographed copy of *Tuff Fluff: The Case of Duckie's Missing Brain***. Case closed!



**TUFF FLUFF: The Case of
Duckie's Missing Brain**

Written and illustrated by Scott Nash



You're invited to **TUFF FLUFF'S Private Eye Party!**

Tuff Fluff is on the case—but he can't do it alone. You and your favorite stuffed animal are invited to help him uncover the clues and piece together a most peculiar puzzle.
Can we count on you?

Where? _____

When? _____

Notes: _____



**TUFF FLUFF: The Case of
Duckie's Missing Brain**

Written and illustrated by Scott Nash

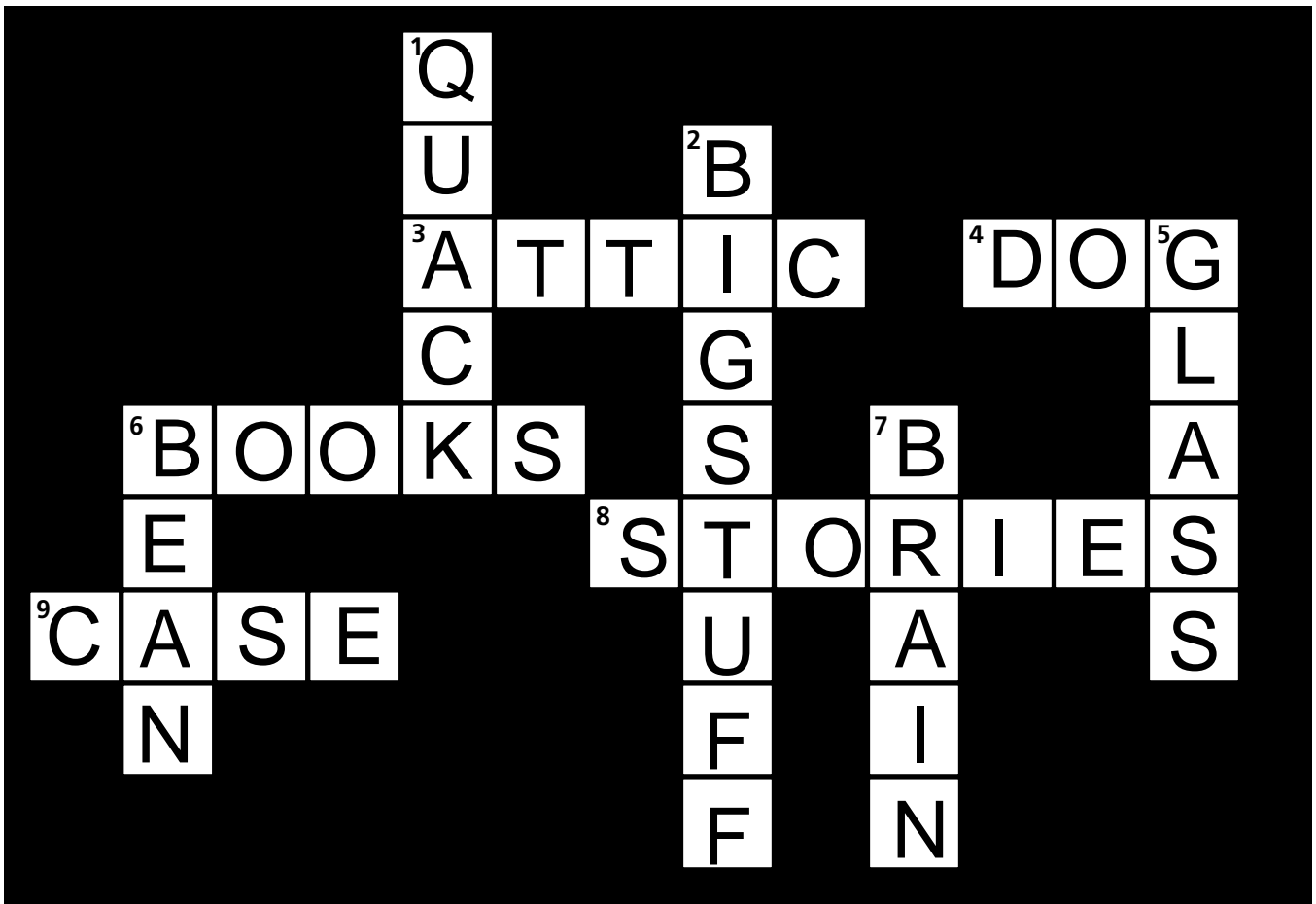
You're invited to **TUFF FLUFF'S Private Eye Party!**

Tuff Fluff is on the case—but he can't do it alone. You and your favorite stuffed animal are invited to help him uncover the clues and piece together a most peculiar puzzle.
Can we count on you?

Where? _____

When? _____

Notes: _____

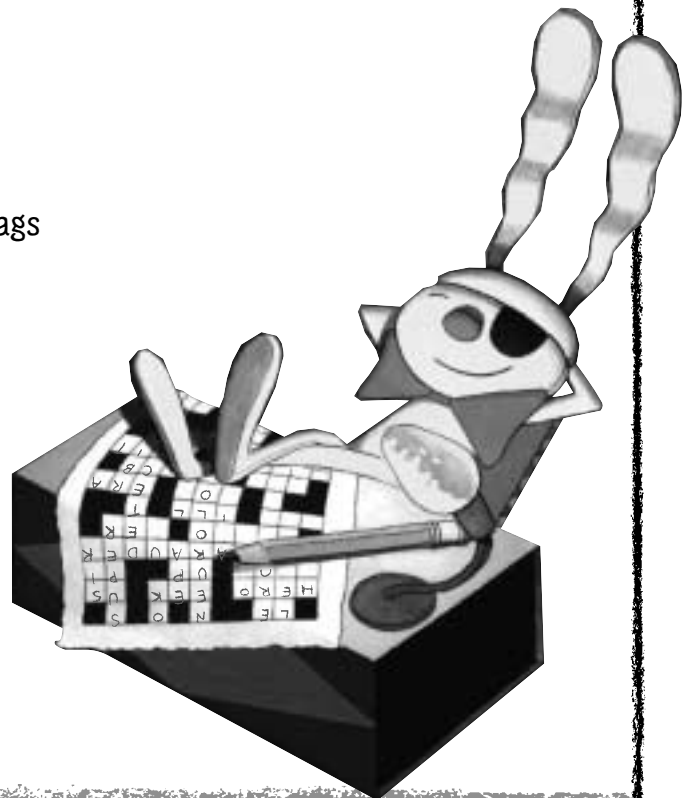


ACROSS

- 3. Tuff Fluff lives in Los _____
- 4. The first beanbag Tuff Fluff meets. A bull _____
- 6. Duckie's apartment is full of these
- 8. After Duckie is mended, he tells these to the beanbags
- 9. The _____ of Duckie's Missing Brain

DOWN

- 1. The only word Duckie can say
- 2. Duckie's best friend
- 5. Tuff Fluff looks through a magnifying
- 6. The piece of evidence that leads to the Beanbags
- 7. Tuff Fluff finds Duckie's missing _____

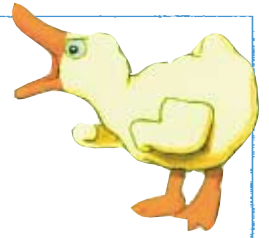


TUFF FLUFF CROSSWORD PUZZLE KEY

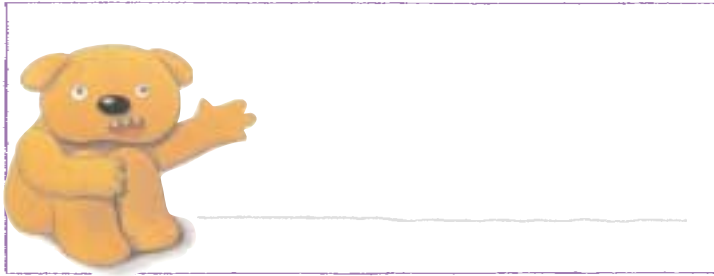
DETECTIVE BADGE



DETECTIVE BADGE



DETECTIVE BADGE



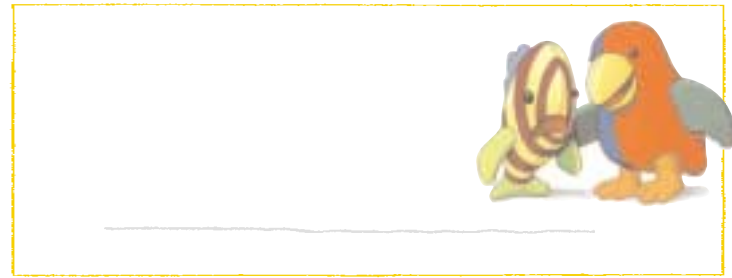
DETECTIVE BADGE



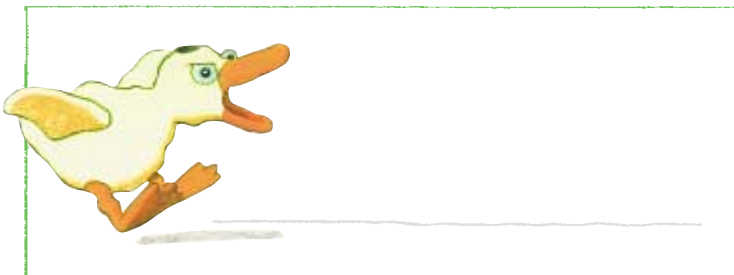
DETECTIVE BADGE



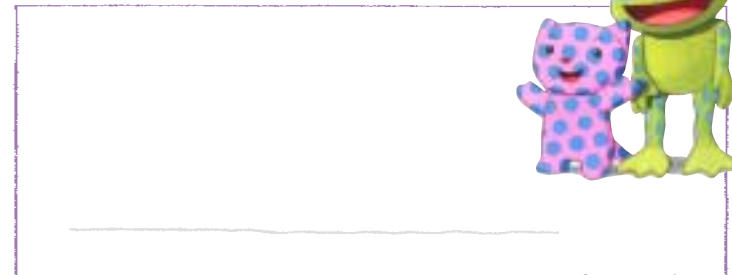
DETECTIVE BADGE



DETECTIVE BADGE

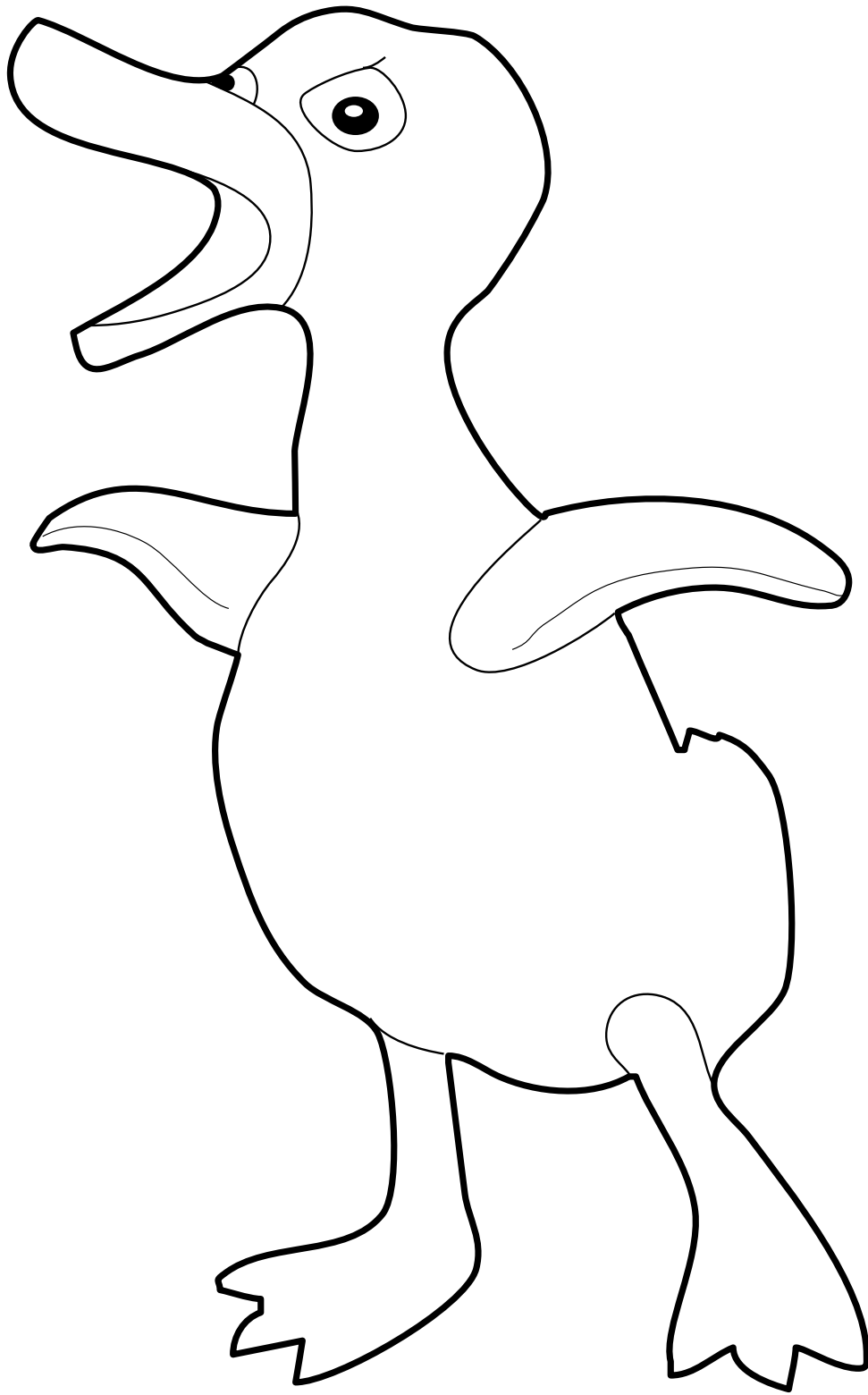


DETECTIVE BADGE



My name is Flopsy Flips Rabbit.
But nobody with any sense calls me that.
To them, I'm Tuff Fluff, Private Investigator.

TUFF FLUFF NAMETAGS

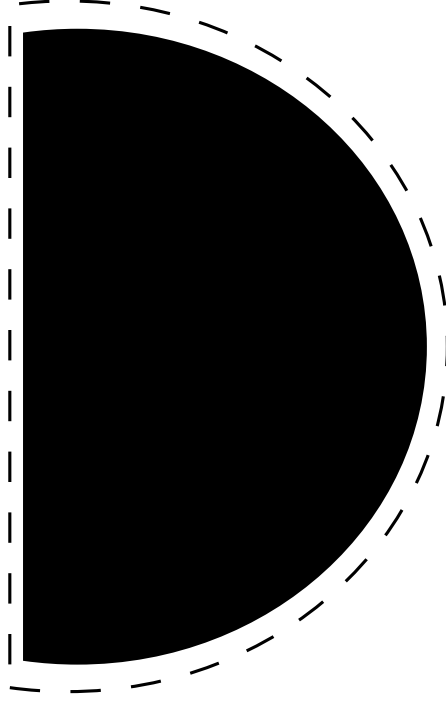


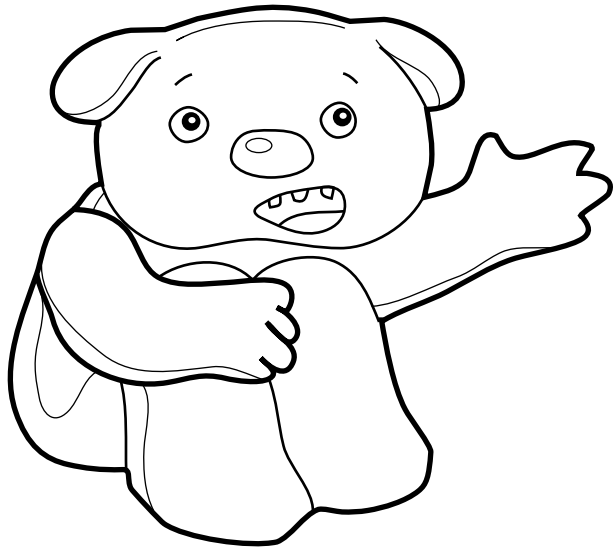
DUCKIE'S MISSING BRAIN COLORING SHEET

Illustration copyright © 2004 by Scott Nash

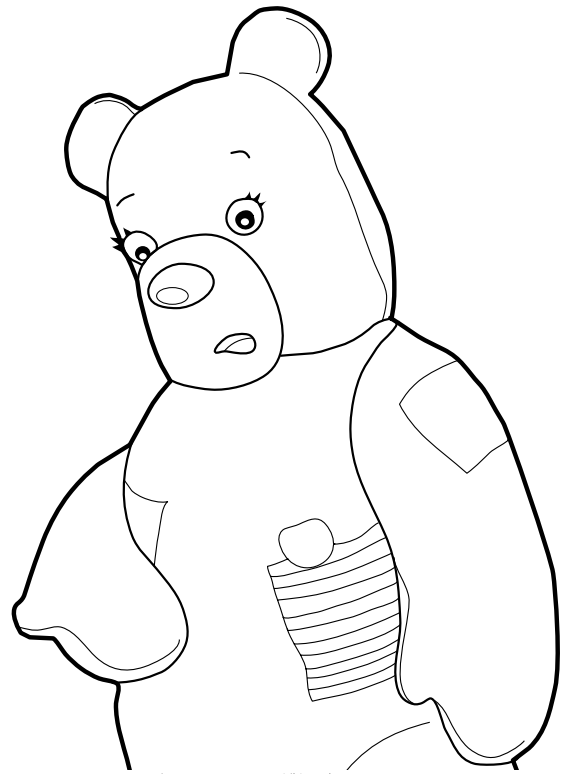
TUFF FLUFF EYE PATCH

INSTRUCTIONS: CUT AROUND DOTTED LINES. HAVE AN ADULT TAPE STRIPS TO EYPATCH AND SECURE

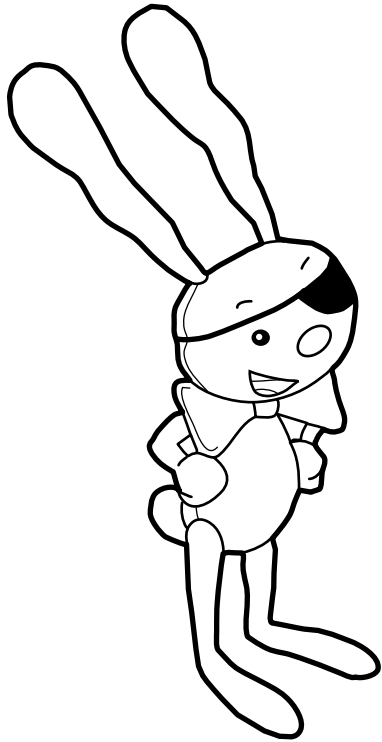




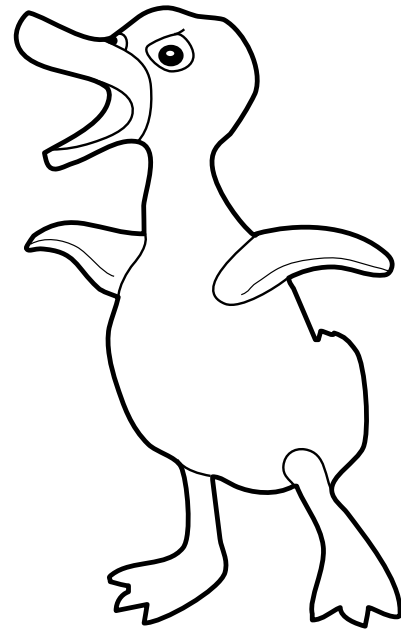
BUTTERBEAN A.K.A. BEANDOG



BLUEBELL A.K.A. BIG STUFF



**FLOPSY FLIPS RABBIT
A.K.A. TUFF FLUFF**



DUCKIE

TUFF FLUFF SUSPECT CARDS